

FRANKLIN COUNTY  
CONVENTION FACILITIES  
AUTHORITY

COLUMBUS

400 N. High Street  
Columbus, OH 43215  
(614) 827-2800  
meetuscolumbus.com

**Addendum No.1  
Request for Bids  
Greater Columbus Convention Center South Facility  
Air Handler Replacement**

Information contained within this Addendum No.1 modifies the March 1, 2023 Project Manual for the Greater Columbus Convention Center South Facility Air Handler Replacement Bid Package 2023-2. Receipt of this Addendum No.1 must be indicated on the Form of Proposal submitted by each bidder.

Addendum No.1 contains answers to all questions received prior to the deadline for submittal of questions. Drawings have been included for added clarity.

Please note that the bid submittal deadline of March 15, 2023 at 3:00 PM EST remains unchanged.

Sincerely,

A handwritten signature in blue ink, appearing to read "Jordan Edmonds".

Jordan Edmonds  
In-House Counsel, FCCFA



March 9, 2023

Project Change No.: \_\_\_\_\_

Heapy Change No.: \_\_\_\_\_

Project: GCCC South Facility Air Handler Replacement

Heapy Project No. 2022-07014

Addendum 1 Description:

Drawing Changes

1. Sheet H001 – HVAC SCHEDULES
  - a. On Fan Schedule, changed Note 3 to read “PROVIDE AND INSTALL RETURN FAN AS PART OF ALTERNATE #3.”
2. Sheet H101 - SOUTH BUILDING LEVEL 4 MECH- ROOM - ENLARGED DEMO PLAN
  - a. On vertical return duct on air handling unit AC-H-2, added coded note 27, which reads “ALTERNATE #5. DEMOLISH EXISTING VERTICAL SUPPLY DUCTWORK DROP TO FLOOR. EXISTING FIRE DAMPER AT FLOOR TO REMAIN. IF ALTERNATE IS NOT ACCEPTED, THEN EXISTING VERTICAL SUPPLY DUCTWORK DROP TO REMAIN.”
3. Sheet H102 - SOUTH BUILDING LEVEL 4 MECH- ROOM - ENLARGED DEMO PLAN
  - a. On vertical return duct on air handling unit AC-H-4, added coded note 28, which reads “ALTERNATE #5. DEMOLISH EXISTING VERTICAL SUPPLY DUCTWORK DROP TO FLOOR. EXISTING FIRE DAMPER AT FLOOR TO REMAIN. IF ALTERNATE IS NOT ACCEPTED, THEN EXISTING VERTICAL SUPPLY DUCTWORK DROP TO REMAIN.”
4. Sheet H201 - SOUTH BUILDING LEVEL 4 MECH- ROOM - ENLARGED NEW WORK PLAN
  - a. Changed Coded Note 13 to read “ALTERNATE #3. IF ALTERNATE #3 IS NOT ACCEPTED, EXISTING RETURN DUCT TO REMAIN.”
  - b. On return air flow measuring station for air handling unit AC-H-2, added coded note 18, which reads “AIR FLOW MEASURING STATION IS PART OF ALTERNATE #5. IF ALTERNATE #3 IS NOT ACCEPTED, AIR FLOW MEASURING STATION TO BE INSTALLED IN EXISTING DUCT.”
  - c. Added Coded Note 17 (reference to Alternate #5) on multiple items for air handling unit AC-H-2. See revised sheet for more information.
5. Sheet H202 - SOUTH BUILDING LEVEL 4 MECH- ROOM - ENLARGED NEW WORK PLAN
  - a. Changed Coded Note 13 to read “ALTERNATE #3. IF ALTERNATE #3 IS NOT ACCEPTED, EXISTING RETURN DUCT TO REMAIN.”
  - b. On return air flow measuring station for air handling unit AC-H-4, added coded note 18, which reads “AIR FLOW MEASURING STATION IS PART OF ALTERNATE #5. IF ALTERNATE #3 IS NOT ACCEPTED, AIR FLOW MEASURING STATION TO BE INSTALLED IN EXISTING DUCT.”
  - c. Added Coded Note 17 (reference to Alternate #5) on multiple items for air handling unit AC-H-4. See revised sheet for more information.

---

Cleveland • Columbus • Dayton • Findlay • Lawrenceburg • Indianapolis

Specification Changes

None

Request for Information

1. **Question** – Sheet H101, coded note 6 at column line OC-5/OC-M. Please confirm that the demolition of this vertical ductwork is part of Alternate 5. Same situation on sheet H102.  
**Answer** – Coded note 6 on H101 and H102 refers to demolition of the supply air vertical duct drop. Coded Note 6 on AC-H-2 and AC-H-4 will be revised to reference Alternate 5. Coded Note 6 on AC-H-1 and AC-H-3 is correctly referenced and is part of base bid.
  
2. **Question** – Sheet H201, AC-H-2, coded note 13 is noted to be part of Alternate 5. It is between the return fan and ductwork that are noted to be part of Alternate 3. Please clarify. Same on sheet H202.  
**Answer** – Revise Coded note 13 on sheet H201 and H202 to read as follows:  
ALTERNATE #3. IF ALTERNATE #3 IS NOT ACCEPTED, EXISTING RETURN DUCT TO REMAIN.
  
3. **Question** – Sheet H201, notes 5 and 2 at AC-H-2. Should these be part of Alternate 5? Same on H202.  
**Answer** – Coded note 5 and 2 on H201 and H202 refers to supply air vertical duct drop. Another coded note will be added to AC-H-2 and AC-H-4 so that it is clear that AC-H-2 and AC-H-4 is to be part of Alternate 5. Coded Note 5 and 2 on AC-H-1 and AC-H-3 is correctly referenced and is part of base bid.
  
4. **Question** – Spec section 23 05 01, 1.3. C. This says that Alternate 3 is for us to provide the return fans for AC-H-2 & 4 as well as the install and all ductwork. Schedule sheet H001, Fans schedule. This says the providing of the fans is Alternate 3 and the install is Alternate 5. Please clarify.  
**Answer** – Alternate 3 is to provide return fans R-H-2(for AC-H-2) and R-H-4(for AC-H-4), installation of the fans and associated return air ductwork upstream of the return fan. Revise Note 3 on Fan Schedule(H001) to read as follows:  
3. PROVIDE AND INSTALL RETURN FAN AS PART OF ALTERNATE #3.

AIR HANDLING UNITS

Table with columns for UNIT NUMBER, LOCATION, SUPPLY FAN, MOTOR(S), PREHEAT COIL, AUTO CONTROL VALVE, COOLING COIL, AUTO CONTROL VALVE, PRE-FILTER, FINAL FILTER, OUTSIDE AIR, DIMENSIONS, and MISC. Includes general notes and detailed specifications for various units like AC-H-1, AC-H-2, AC-H-3, AC-H-4.

DUCT CONSTRUCTION, SEALING, AND INSULATION

Table with columns for DUCT SYSTEM, S.M.A.C.N.A. CLASS, LEAKAGE CLASS, INTERNALLY LINED, EXTERNAL INSULATION, DOUBLE WALL INSULATED, and NOT INSULATED. Includes general notes and specific data for supply, return, and relief air ductwork.

FANS

Table with columns for MARK, DESCRIPTION, SERVICE, FAN CFM, STATIC PRESSURE (IN. W.C.), APPROX. WHEEL DIAMETER, MAXIMUM SONES, HORSEPOWER (HP), VOLTAGE - PHASE, ELECTRONICALLY COMMUTATED, ECOMCA (AMPS, TOTAL), ECOMCP (AMPS, TOTAL), VARIABLE FREQUENCY DRIVE, MINIMUM SCR (AMPS), APPROX. ROOF/WALL OPENING, APPROX. WEIGHT (LBS.), VIBRATION ISOLATOR TYPE, MANUFACTURER, MODEL, and SEE NOTE. Includes general notes and a list of fans.

HYDRONIC PUMPS

Table with columns for MARK, DESCRIPTION, SERVICE, GPM, MIN. REQUIRED FT. HD., HORSEPOWER (HP), VOLTAGE - PHASE, RPM, ELECTRONICALLY COMMUTATED, ECOMCA (AMPS, TOTAL), ECOMCP (AMPS, TOTAL), VARIABLE FREQUENCY DRIVE, MINIMUM SCR (AMPS), MINIMUM PUMP EFFICIENCY (%), MAXIMUM P.E.I. (I), MAXIMUM P.E.I. (V), PUMP SUCTION SIZE, PUMP DISCHARGE SIZE, VIBRATION ISOLATOR TYPE, MANUFACTURER, MODEL, and SEE NOTE. Includes general notes and a list of pumps.

HVAC DESIGN DATA

Table with columns for SPACE NAME / TYPE, DESIGN ALTITUDE, and INTERIOR DESIGN DATA (SUMMER, WINTER). Includes general notes and specific design parameters for Battelle Ballroom.

INDOOR AIR QUALITY SYSTEM SCHEDULE

Table with columns for MARK, SERVICE, DESCRIPTION, AHU AIRFLOW, SIZE, VOLTAGE, PHASE, HERTZ, FLA, MCA, MOCF, and NOTES. Includes general notes and a list of air handling units.

CONSULTANTS



Greater Columbus Convention Center IAQ Upgrade  
Greater Columbus Convention Center  
400 North High Street  
Columbus, Ohio 43215

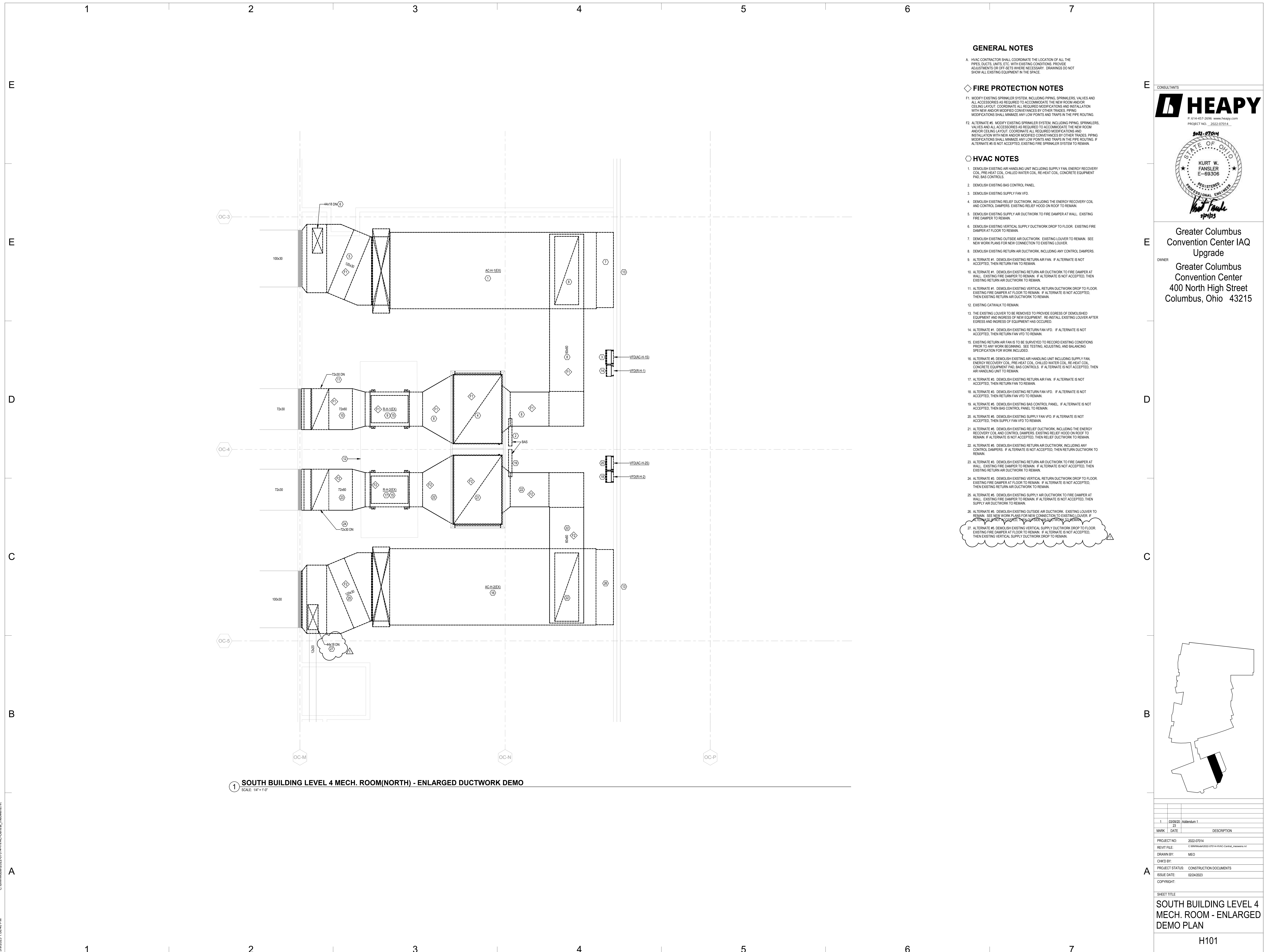
D

C

B

A

HVAC SCHEDULES



**GENERAL NOTES**

4. HVAC CONTRACTOR SHALL COORDINATE THE LOCATION OF ALL THE PIPES, DUCTS, UNITS, ETC. WITH EXISTING CONDITIONS. PROVIDE ADJUSTMENTS OR OFFSETS WHERE NECESSARY. DRAWINGS DO NOT SHOW ALL EXISTING EQUIPMENT IN THE SPACE.

**FIRE PROTECTION NOTES**

F1. MODIFY EXISTING SPRINKLER SYSTEM, INCLUDING PIPING, SPRINKLERS, VALVES AND ALL ACCESSORIES AS REQUIRED TO ACCOMMODATE THE NEW ROOM AND/OR CEILING LAYOUT. COORDINATE ALL REQUIRED MODIFICATIONS AND INSTALLATION WITH NEW AND/OR MODIFIED CONCEALED SERVICES BY OTHER TRADES. PIPING MODIFICATIONS SHALL MINIMIZE ANY LOW POINTS AND TRAPS IN THE PIPE ROUTING.  
 F2. ALTERNATE #5: MODIFY EXISTING SPRINKLER SYSTEM, INCLUDING PIPING, SPRINKLERS, VALVES AND ALL ACCESSORIES AS REQUIRED TO ACCOMMODATE THE NEW ROOM AND/OR CEILING LAYOUT. COORDINATE ALL REQUIRED MODIFICATIONS AND INSTALLATION WITH NEW AND/OR MODIFIED CONCEALED SERVICES BY OTHER TRADES. PIPING MODIFICATIONS SHALL MINIMIZE ANY LOW POINTS AND TRAPS IN THE PIPE ROUTING. IF ALTERNATE #5 IS NOT ACCEPTED, EXISTING FIRE SPRINKLER SYSTEM TO REMAIN.

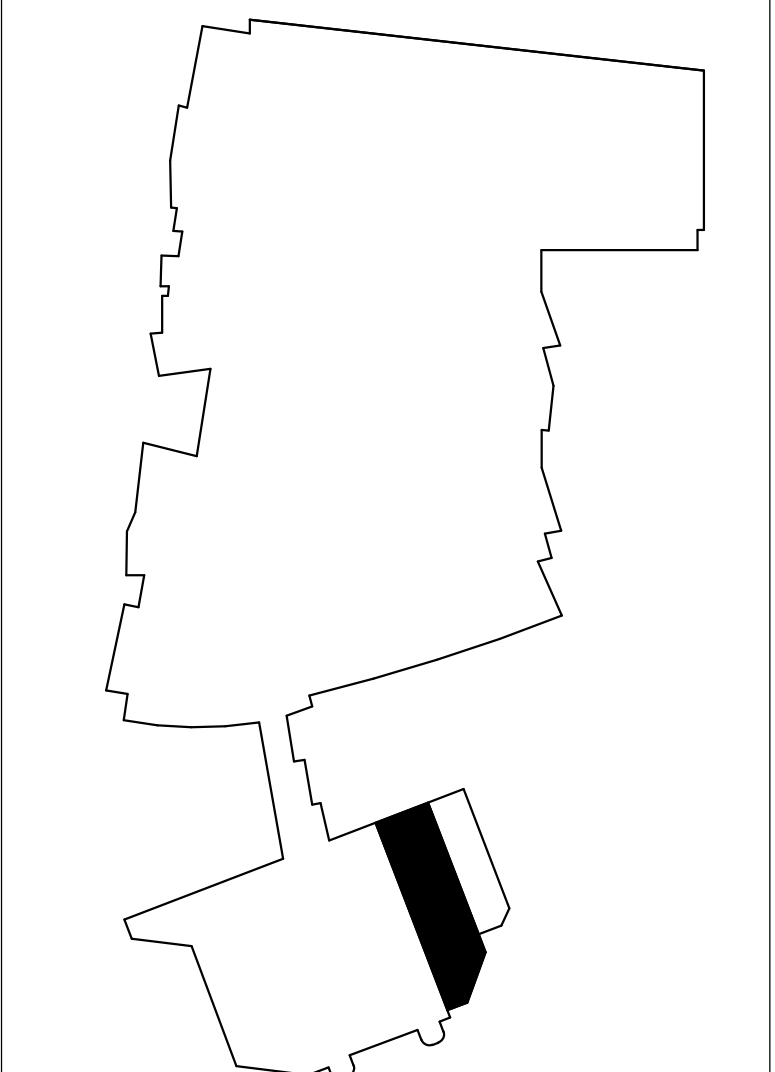
**HVAC NOTES**

1. DEMOLISH EXISTING AIR HANDLING UNIT INCLUDING SUPPLY FAN, ENERGY RECOVERY COIL, PRE-HEAT COIL, CHILLED WATER COIL, RE-HEAT COIL, CONCRETE EQUIPMENT PAD, BAS CONTROL PANEL.
2. DEMOLISH EXISTING BAS CONTROL PANEL.
3. DEMOLISH EXISTING SUPPLY FAN VFD.
4. DEMOLISH EXISTING RELIEF DUCTWORK, INCLUDING THE ENERGY RECOVERY COIL AND CONTROL DAMPERS. EXISTING RELIEF HOOD ON ROOF TO REMAIN.
5. DEMOLISH EXISTING SUPPLY AIR DUCTWORK TO FIRE DAMPER AT WALL. EXISTING FIRE DAMPER TO REMAIN.
6. DEMOLISH EXISTING VERTICAL SUPPLY DUCTWORK DROP TO FLOOR. EXISTING FIRE DAMPER AT FLOOR TO REMAIN.
7. DEMOLISH EXISTING OUTSIDE AIR DUCTWORK. EXISTING LOUVER TO REMAIN. SEE NEW WORK PLANS FOR NEW CONNECTION TO EXISTING LOUVER.
8. DEMOLISH EXISTING RETURN AIR DUCTWORK, INCLUDING ANY CONTROL DAMPERS.
9. ALTERNATE #1: DEMOLISH EXISTING RETURN AIR FAN. IF ALTERNATE IS NOT ACCEPTED, THEN RETURN FAN TO REMAIN.
10. ALTERNATE #1: DEMOLISH EXISTING RETURN AIR DUCTWORK TO FIRE DAMPER AT WALL. EXISTING FIRE DAMPER TO REMAIN. IF ALTERNATE IS NOT ACCEPTED, THEN EXISTING RETURN AIR DUCTWORK TO REMAIN.
11. ALTERNATE #1: DEMOLISH EXISTING VERTICAL RETURN DUCTWORK DROP TO FLOOR. EXISTING FIRE DAMPER AT FLOOR TO REMAIN. IF ALTERNATE IS NOT ACCEPTED, THEN EXISTING RETURN AIR DUCTWORK TO REMAIN.
12. EXISTING CATWALK TO REMAIN.
13. THE EXISTING LOUVER TO BE REMOVED TO PROVIDE EGRESS OF DEMOLISHED EQUIPMENT AND INGRESS OF NEW EQUIPMENT. RE-INSTALL EXISTING LOUVER AFTER EGRESS AND INGRESS OF EQUIPMENT HAS OCCURRED.
14. ALTERNATE #1: DEMOLISH EXISTING RETURN FAN VFD. IF ALTERNATE IS NOT ACCEPTED, THEN RETURN FAN VFD TO REMAIN.
15. EXISTING RETURN AIR FAN IS TO BE SURVEYED TO RECORD EXISTING CONDITIONS PRIOR TO ANY WORK BEGINNING. SEE TESTING, ADJUSTING, AND BALANCING SPECIFICATION FOR WORK INCLUDED.
16. ALTERNATE #5: DEMOLISH EXISTING AIR HANDLING UNIT INCLUDING SUPPLY FAN, ENERGY RECOVERY COIL, PRE-HEAT COIL, CHILLED WATER COIL, RE-HEAT COIL, CONCRETE EQUIPMENT PAD, BAS CONTROL PANEL. IF ALTERNATE IS NOT ACCEPTED, THEN AIR HANDLING UNIT TO REMAIN.
17. ALTERNATE #3: DEMOLISH EXISTING RETURN AIR FAN. IF ALTERNATE IS NOT ACCEPTED, THEN RETURN FAN TO REMAIN.
18. ALTERNATE #3: DEMOLISH EXISTING RETURN FAN VFD. IF ALTERNATE IS NOT ACCEPTED, THEN RETURN FAN VFD TO REMAIN.
19. ALTERNATE #5: DEMOLISH EXISTING BAS CONTROL PANEL. IF ALTERNATE IS NOT ACCEPTED, THEN BAS CONTROL PANEL TO REMAIN.
20. ALTERNATE #5: DEMOLISH EXISTING SUPPLY FAN VFD. IF ALTERNATE IS NOT ACCEPTED, THEN SUPPLY FAN VFD TO REMAIN.
21. ALTERNATE #5: DEMOLISH EXISTING RELIEF DUCTWORK, INCLUDING THE ENERGY RECOVERY COIL AND CONTROL DAMPERS. EXISTING RELIEF HOOD ON ROOF TO REMAIN. IF ALTERNATE IS NOT ACCEPTED, THEN RELIEF DUCTWORK TO REMAIN.
22. ALTERNATE #5: DEMOLISH EXISTING RETURN AIR DUCTWORK, INCLUDING ANY CONTROL DAMPERS. IF ALTERNATE IS NOT ACCEPTED, THEN RETURN DUCTWORK TO REMAIN.
23. ALTERNATE #3: DEMOLISH EXISTING RETURN AIR DUCTWORK TO FIRE DAMPER AT WALL. EXISTING FIRE DAMPER TO REMAIN. IF ALTERNATE IS NOT ACCEPTED, THEN EXISTING RETURN AIR DUCTWORK TO REMAIN.
24. ALTERNATE #3: DEMOLISH EXISTING VERTICAL RETURN DUCTWORK DROP TO FLOOR. EXISTING FIRE DAMPER AT FLOOR TO REMAIN. IF ALTERNATE IS NOT ACCEPTED, THEN EXISTING RETURN AIR DUCTWORK TO REMAIN.
25. ALTERNATE #5: DEMOLISH EXISTING SUPPLY AIR DUCTWORK TO FIRE DAMPER AT WALL. EXISTING FIRE DAMPER TO REMAIN. IF ALTERNATE IS NOT ACCEPTED, THEN SUPPLY AIR DUCTWORK TO REMAIN.
26. ALTERNATE #5: DEMOLISH EXISTING OUTSIDE AIR DUCTWORK. EXISTING LOUVER TO REMAIN. SEE NEW WORK PLANS FOR NEW CONNECTION TO EXISTING LOUVER. IF ALTERNATE IS NOT ACCEPTED, THEN EXISTING OUTSIDE AIR DUCTWORK TO REMAIN.
27. ALTERNATE #5: DEMOLISH EXISTING VERTICAL SUPPLY DUCTWORK DROP TO FLOOR. EXISTING FIRE DAMPER AT FLOOR TO REMAIN. IF ALTERNATE IS NOT ACCEPTED, THEN EXISTING VERTICAL SUPPLY DUCTWORK DROP TO REMAIN.

**1 SOUTH BUILDING LEVEL 4 MECH. ROOM(NORTH) - ENLARGED DUCTWORK DEMO**  
 SCALE: 1/4" = 1'-0"



Greater Columbus Convention Center IAQ Upgrade  
 Greater Columbus Convention Center  
 400 North High Street  
 Columbus, Ohio 43215



MARK	DATE	DESCRIPTION
1	03/09/20	Addendum 1
2		

PROJECT NO: 2022-07014  
 REVIT FILE: C:\BIM\Mod\2022-07014-HVAC-Central\_mechrooms.rvt  
 DRAWN BY: MED  
 DWD BY:  
 PROJECT STATUS: CONSTRUCTION DOCUMENTS  
 ISSUE DATE: 02/24/2023  
 COPYRIGHT:

**SOUTH BUILDING LEVEL 4 MECH. ROOM - ENLARGED DEMO PLAN**

H101





1 SOUTH BUILDING LEVEL 4 MECH. ROOM(SOUTH) - ENLARGED DUCTWORK DEMO  
SCALE: 1/4" = 1'-0"

**GENERAL NOTES**

A. HVAC CONTRACTOR SHALL COORDINATE THE LOCATION OF ALL THE PIPES, DUCTS, UNITS, ETC. WITH EXISTING CONDITIONS. PROVIDE ADJUSTMENTS OR OFF-SETS WHERE NECESSARY. DRAWINGS DO NOT SHOW ALL EXISTING EQUIPMENT IN THE SPACE.

**FIRE PROTECTION NOTES**

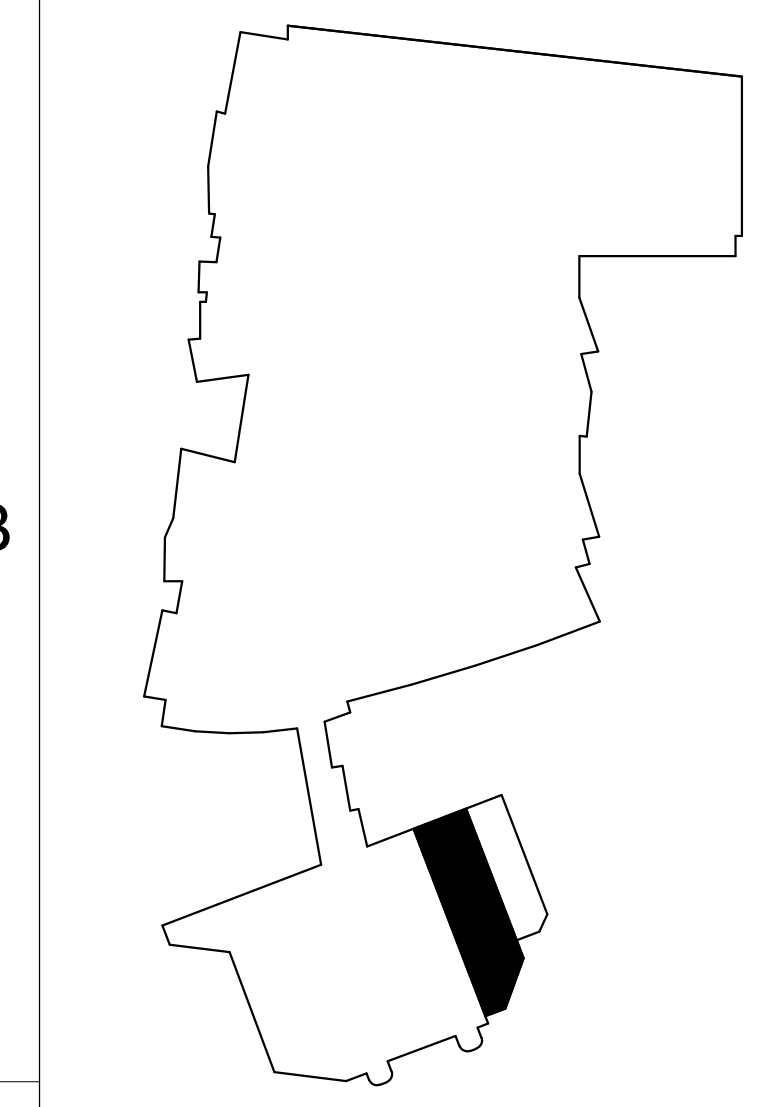
F1. MODIFY EXISTING SPRINKLER SYSTEM, INCLUDING PIPING, SPRINKLERS, VALVES AND ALL ACCESSORIES AS REQUIRED TO ACCOMMODATE THE NEW ROOM AND/OR CEILING LAYOUT. COORDINATE ALL REQUIRED MODIFICATIONS AND INSTALLATION WITH NEW AND/OR MODIFIED CONCEALED BY OTHER TRADES. PIPING MODIFICATIONS SHALL MINIMIZE ANY LOW POINTS AND TRAPS IN THE PIPE ROUTING.  
F2. ALTERNATE #5: MODIFY EXISTING SPRINKLER SYSTEM, INCLUDING PIPING, SPRINKLERS, VALVES AND ALL ACCESSORIES AS REQUIRED TO ACCOMMODATE THE NEW ROOM AND/OR CEILING LAYOUT. COORDINATE ALL REQUIRED MODIFICATIONS AND INSTALLATION WITH NEW AND/OR MODIFIED CONCEALED BY OTHER TRADES. PIPING MODIFICATIONS SHALL MINIMIZE ANY LOW POINTS AND TRAPS IN THE PIPE ROUTING. IF ALTERNATE #5 IS NOT ACCEPTED, EXISTING FIRE SPRINKLER SYSTEM TO REMAIN.

**HVAC NOTES**

1. DEMOLISH EXISTING AIR HANDLING UNIT INCLUDING SUPPLY FAN, ENERGY RECOVERY COIL, PRE-HEAT COIL, CHILLED WATER COIL, RE-HEAT COIL, CONCRETE EQUIPMENT PAD, BAS CONTROLS.
2. DEMOLISH EXISTING BAS CONTROL PANEL.
3. DEMOLISH EXISTING SUPPLY FAN VFD.
4. DEMOLISH EXISTING RELIEF DUCTWORK, INCLUDING THE ENERGY RECOVERY COIL AND CONTROL DAMPERS, EXISTING RELIEF HOOD ON ROOF TO REMAIN.
5. DEMOLISH EXISTING SUPPLY AIR DUCTWORK TO FIRE DAMPER AT WALL. EXISTING FIRE DAMPER TO REMAIN.
6. DEMOLISH EXISTING VERTICAL SUPPLY DUCTWORK DROP TO FLOOR. EXISTING FIRE DAMPER AT FLOOR TO REMAIN.
7. DEMOLISH EXISTING OUTSIDE AIR DUCTWORK. EXISTING LOUVER TO REMAIN. SEE NEW WORK PLANS FOR NEW CONNECTION TO EXISTING LOUVER.
8. DEMOLISH EXISTING RETURN AIR DUCTWORK, INCLUDING ANY CONTROL DAMPERS.
9. ALTERNATE #1: DEMOLISH EXISTING RETURN AIR FAN. IF ALTERNATE IS NOT ACCEPTED, THEN RETURN FAN VFD TO REMAIN.
10. ALTERNATE #1: DEMOLISH EXISTING RETURN AIR DUCTWORK TO FIRE DAMPER AT WALL. EXISTING FIRE DAMPER TO REMAIN. IF ALTERNATE IS NOT ACCEPTED, THEN EXISTING RETURN AIR DUCTWORK TO REMAIN.
11. ALTERNATE #1: DEMOLISH EXISTING VERTICAL RETURN DUCTWORK DROP TO FLOOR. EXISTING FIRE DAMPER AT FLOOR TO REMAIN. IF ALTERNATE IS NOT ACCEPTED, THEN EXISTING RETURN AIR DUCTWORK TO REMAIN.
12. EXISTING VFD FOR MAKE-UP AIR (MUA-1) TO REMAIN.
13. EXISTING AHU AND ASSOCIATED DUCTWORK AND CONTROLS TO REMAIN.
14. THE EXISTING LOUVER TO BE REMOVED TO PROVIDE EGRESS OF DEMOLISHED EQUIPMENT AND INGRESS OF NEW EQUIPMENT. RE-INSTALL EXISTING LOUVER AFTER EGRESS AND INGRESS OF EQUIPMENT HAS OCCURRED.
15. ALTERNATE #1: DEMOLISH EXISTING RETURN FAN VFD. IF ALTERNATE IS NOT ACCEPTED, THEN RETURN FAN VFD TO REMAIN.
16. EXISTING RETURN AIR FAN IS TO BE SURVEYED TO RECORD EXISTING CONDITIONS PRIOR TO ANY WORK BEGINNING. SEE TESTING, ADJUSTING, AND BALANCING SPECIFICATION FOR WORK INCLUDED.
17. ALTERNATE #5: DEMOLISH EXISTING AIR HANDLING UNIT INCLUDING SUPPLY FAN, ENERGY RECOVERY COIL, PRE-HEAT COIL, CHILLED WATER COIL, RE-HEAT COIL, CONCRETE EQUIPMENT PAD, BAS CONTROLS. IF ALTERNATE IS NOT ACCEPTED, THEN AIR HANDLING UNIT TO REMAIN.
18. ALTERNATE #3: DEMOLISH EXISTING RETURN AIR FAN. IF ALTERNATE IS NOT ACCEPTED, THEN RETURN FAN TO REMAIN.
19. ALTERNATE #3: DEMOLISH EXISTING RETURN FAN VFD. IF ALTERNATE IS NOT ACCEPTED, THEN RETURN FAN VFD TO REMAIN.
20. ALTERNATE #5: DEMOLISH EXISTING BAS CONTROL PANEL. IF ALTERNATE IS NOT ACCEPTED, THEN BAS CONTROL PANEL TO REMAIN.
21. ALTERNATE #5: DEMOLISH EXISTING SUPPLY FAN VFD. IF ALTERNATE IS NOT ACCEPTED, THEN SUPPLY FAN VFD TO REMAIN.
22. ALTERNATE #5: DEMOLISH EXISTING RELIEF DUCTWORK, INCLUDING THE ENERGY RECOVERY COIL AND CONTROL DAMPERS, EXISTING RELIEF HOOD ON ROOF TO REMAIN. IF ALTERNATE IS NOT ACCEPTED, THEN RELIEF DUCTWORK TO REMAIN.
23. ALTERNATE #5: DEMOLISH EXISTING RETURN AIR DUCTWORK, INCLUDING ANY CONTROL DAMPERS. IF ALTERNATE IS NOT ACCEPTED, THEN RETURN DUCTWORK TO REMAIN.
24. ALTERNATE #1: DEMOLISH EXISTING RETURN AIR DUCTWORK TO FIRE DAMPER AT WALL. EXISTING FIRE DAMPER TO REMAIN. IF ALTERNATE IS NOT ACCEPTED, THEN EXISTING RETURN AIR DUCTWORK TO REMAIN.
25. ALTERNATE #3: DEMOLISH EXISTING VERTICAL RETURN DUCTWORK DROP TO FLOOR. EXISTING FIRE DAMPER AT FLOOR TO REMAIN. IF ALTERNATE IS NOT ACCEPTED, THEN EXISTING RETURN AIR DUCTWORK TO REMAIN.
26. ALTERNATE #5: DEMOLISH EXISTING SUPPLY AIR DUCTWORK TO FIRE DAMPER AT WALL. EXISTING FIRE DAMPER TO REMAIN. IF ALTERNATE IS NOT ACCEPTED, THEN SUPPLY AIR DUCTWORK TO REMAIN.
27. ALTERNATE #5: DEMOLISH EXISTING OUTSIDE AIR DUCTWORK. EXISTING LOUVER TO REMAIN. SEE NEW WORK PLANS FOR NEW CONNECTION TO EXISTING LOUVER. IF ALTERNATE IS NOT ACCEPTED, THEN EXISTING OUTSIDE AIR DUCTWORK TO REMAIN.
28. ALTERNATE #5: DEMOLISH EXISTING VERTICAL SUPPLY DUCTWORK DROP TO FLOOR. EXISTING FIRE DAMPER AT FLOOR TO REMAIN. IF ALTERNATE IS NOT ACCEPTED, THEN EXISTING VERTICAL SUPPLY DUCTWORK DROP TO REMAIN.



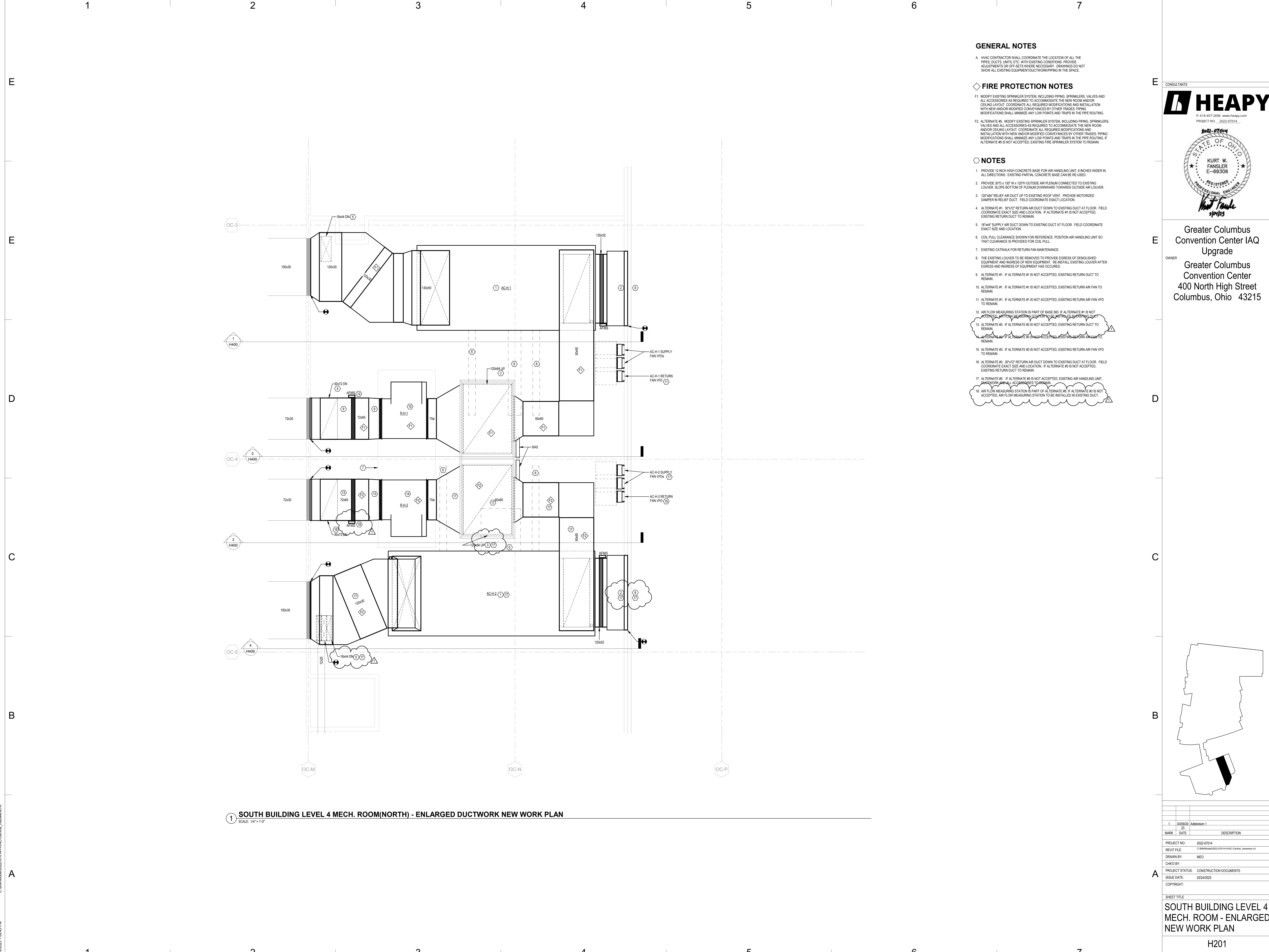
Greater Columbus Convention Center IAQ Upgrade  
OWNER  
Greater Columbus Convention Center  
400 North High Street  
Columbus, Ohio 43215



MARK	DATE	DESCRIPTION
1	03/09/20	Addendum 1
		25

PROJECT NO: 2022-07014  
REVIT FILE: C:\BIM\Mod\2022-07014-HVAC-Central\_mechroom.rvt  
DRAWN BY: MED  
CHKD BY:  
PROJECT STATUS: CONSTRUCTION DOCUMENTS  
ISSUE DATE: 02/24/2023  
COPYRIGHT:

SHEET TITLE  
SOUTH BUILDING LEVEL 4 MECH. ROOM - ENLARGED DEMO PLAN  
H102



**1 SOUTH BUILDING LEVEL 4 MECH. ROOM(NORTH) - ENLARGED DUCTWORK NEW WORK PLAN**  
SCALE: 1/4" = 1'-0"

**GENERAL NOTES**

- A. HVAC CONTRACTOR SHALL COORDINATE THE LOCATION OF ALL THE PIPES, DUCTS, UNITS, ETC. WITH EXISTING CONDITIONS. PROVIDE ADJUSTMENTS OR OFF-SETS WHERE NECESSARY. DRAWINGS DO NOT SHOW ALL EXISTING EQUIPMENT, DUCTWORK OR PIPING IN THE SPACE.

**FIRE PROTECTION NOTES**

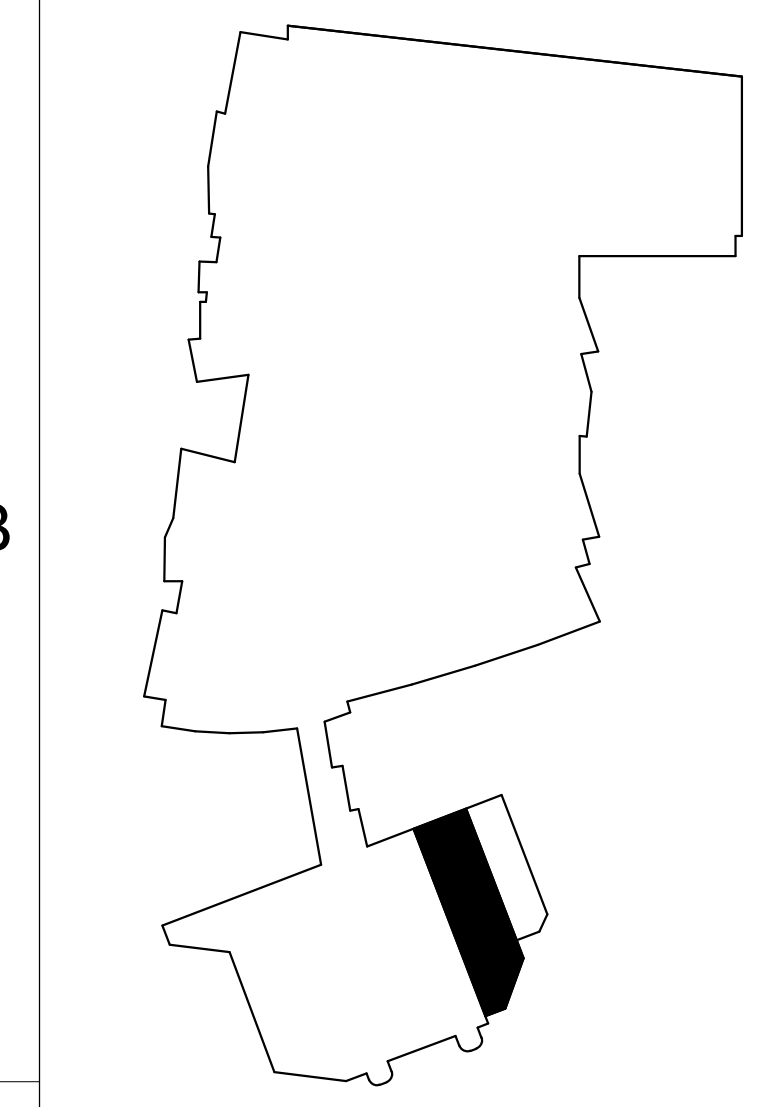
- F1. MODIFY EXISTING SPRINKLER SYSTEM INCLUDING PIPING, SPRINKLERS, VALVES AND ALL ACCESSORIES AS REQUIRED TO ACCOMMODATE THE NEW ROOM AND/OR CEILING LAYOUT. COORDINATE ALL REQUIRED MODIFICATIONS AND INSTALLATION WITH NEW AND/OR MODIFIED CONCEALED CONCEALED BY OTHER TRADES. PIPING MODIFICATIONS SHALL MINIMIZE ANY LOW POINTS AND TRAPS IN THE PIPE ROUTING.
- F2. ALTERNATE #5. MODIFY EXISTING SPRINKLER SYSTEM INCLUDING PIPING, SPRINKLERS, VALVES AND ALL ACCESSORIES AS REQUIRED TO ACCOMMODATE THE NEW ROOM AND/OR CEILING LAYOUT. COORDINATE ALL REQUIRED MODIFICATIONS AND INSTALLATION WITH NEW AND/OR MODIFIED CONCEALED CONCEALED BY OTHER TRADES. PIPING MODIFICATIONS SHALL MINIMIZE ANY LOW POINTS AND TRAPS IN THE PIPE ROUTING. IF ALTERNATE #5 IS NOT ACCEPTED, EXISTING FIRE SPRINKLER SYSTEM TO REMAIN.

**NOTES**

- 1. PROVIDE 12 INCH HIGH CONCRETE BASE FOR AIR HANDLING UNIT. 8 INCHES WIDER IN ALL DIRECTIONS. EXISTING PARTIAL CONCRETE BASE CAN BE REUSED.
- 2. PROVIDE 30"x137" W x 120" H OUTSIDE AIR FLENUM CONNECTED TO EXISTING LOUVER. SLOPE BOTTOM OF FLENUM DOWNWARD TOWARDS OUTSIDE AIR LOUVER.
- 3. 120"x84" RELIEF AIR DUCT UP TO EXISTING ROOF VENT. PROVIDE MOTORIZED DAMPER IN RELIEF DUCT. FIELD COORDINATE EXACT LOCATION.
- 4. ALTERNATE #1. 30"x72" RETURN AIR DUCT DOWN TO EXISTING DUCT AT FLOOR. FIELD COORDINATE EXACT SIZE AND LOCATION. IF ALTERNATE #1 IS NOT ACCEPTED, EXISTING RETURN DUCT TO REMAIN.
- 5. 18"x4" SUPPLY AIR DUCT DOWN TO EXISTING DUCT AT FLOOR. FIELD COORDINATE EXACT SIZE AND LOCATION.
- 6. COIL PULL CLEARANCE SHOWN FOR REFERENCE. POSITION AIR HANDLING UNIT SO THAT CLEARANCE IS PROVIDED FOR COIL PULL.
- 7. EXISTING CATHALK FOR RETURN FAN MAINTENANCE.
- 8. THE EXISTING LOUVER TO BE REMOVED TO PROVIDE EGRESS OF DEMOLISHED EQUIPMENT AND INGRESS OF NEW EQUIPMENT. RE-INSTALL EXISTING LOUVER AFTER EGRESS AND INGRESS OF EQUIPMENT HAS OCCURED.
- 9. ALTERNATE #1. IF ALTERNATE #1 IS NOT ACCEPTED, EXISTING RETURN AIR DUCT TO REMAIN.
- 10. ALTERNATE #1. IF ALTERNATE #1 IS NOT ACCEPTED, EXISTING RETURN AIR FAN TO REMAIN.
- 11. ALTERNATE #1. IF ALTERNATE #1 IS NOT ACCEPTED, EXISTING RETURN AIR FAN VFD TO REMAIN.
- 12. AIR FLOW MEASURING STATION IS PART OF BASE BID. IF ALTERNATE #1 IS NOT ACCEPTED, AIR FLOW MEASURING STATION TO BE INSTALLED IN EXISTING DUCT.
- 13. ALTERNATE #3. IF ALTERNATE #3 IS NOT ACCEPTED, EXISTING RETURN DUCT TO REMAIN.
- 14. ALTERNATE #3. IF ALTERNATE #3 IS NOT ACCEPTED, EXISTING RETURN AIR FAN TO REMAIN.
- 15. ALTERNATE #3. IF ALTERNATE #3 IS NOT ACCEPTED, EXISTING RETURN AIR FAN VFD TO REMAIN.
- 16. ALTERNATE #3. 30"x72" RETURN AIR DUCT DOWN TO EXISTING DUCT AT FLOOR. FIELD COORDINATE EXACT SIZE AND LOCATION. IF ALTERNATE #3 IS NOT ACCEPTED, EXISTING RETURN DUCT TO REMAIN.
- 17. ALTERNATE #5. IF ALTERNATE #5 IS NOT ACCEPTED, EXISTING AIR HANDLING UNIT, PARTIAL CONCRETE BASE AND ACCESSORIES TO REMAIN.
- 18. AIR FLOW MEASURING STATION IS PART OF ALTERNATE #5. IF ALTERNATE #5 IS NOT ACCEPTED, AIR FLOW MEASURING STATION TO BE INSTALLED IN EXISTING DUCT.



**Greater Columbus Convention Center IAQ Upgrade**  
OWNER  
**Greater Columbus Convention Center**  
400 North High Street  
Columbus, Ohio 43215



MARK	DATE	DESCRIPTION
1	03/09/20	Addendum 1
	23	

PROJECT NO: 2022-07014  
REVIT FILE: C:\BIM\Mod\2022-07014-HVAC-Central\_mechrooms.rvt  
DRAWN BY: MED  
CHKD BY:  
PROJECT STATUS: CONSTRUCTION DOCUMENTS  
ISSUE DATE: 02/24/2023  
COPYRIGHT:

**SOUTH BUILDING LEVEL 4 MECH. ROOM - ENLARGED NEW WORK PLAN**  
H201

3/9/2023 1:08:43 PM C:\BIM\Mod\2022-07014-HVAC-Central\_mechrooms.rvt



1 SOUTH BUILDING LEVEL 4 MECH. ROOM(SOUTH) - ENLARGED DUCTWORK NEW WORK PLAN  
SCALE: 1/4" = 1'-0"

**GENERAL NOTES**

A. HVAC CONTRACTOR SHALL COORDINATE THE LOCATION OF ALL THE PIPES, DUCTS, UNITS, ETC. WITH EXISTING CONDITIONS. PROVIDE ADJUSTMENTS OR OFF-SETS WHERE NECESSARY. DRAWINGS DO NOT SHOW ALL EXISTING EQUIPMENT/DUCTWORK/PIPPING IN THE SPACE.

**FIRE PROTECTION NOTES**

F1. MODIFY EXISTING SPRINKLER SYSTEM INCLUDING PIPING, SPRINKLERS, VALVES AND ALL ACCESSORIES AS REQUIRED TO ACCOMMODATE THE NEW ROOM AND/OR CEILING LAYOUT. COORDINATE ALL REQUIRED MODIFICATIONS AND INSTALLATION WITH NEW AND/OR MODIFIED CONCEALED BY OTHER TRADES. PIPING MODIFICATIONS SHALL MINIMIZE ANY LOW POINTS AND TRAPS IN THE PIPE ROUTING.

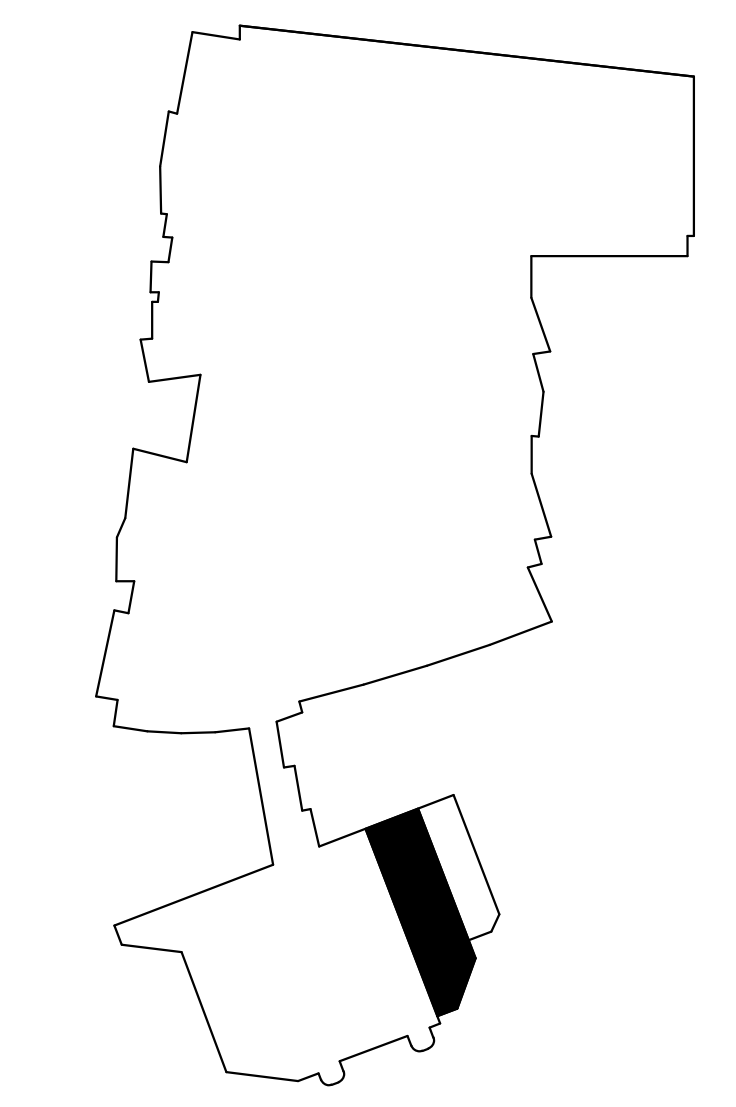
F2. ALTERNATE #1. MODIFY EXISTING SPRINKLER SYSTEM INCLUDING PIPING, SPRINKLERS, VALVES AND ALL ACCESSORIES AS REQUIRED TO ACCOMMODATE THE NEW ROOM AND/OR CEILING LAYOUT. COORDINATE ALL REQUIRED MODIFICATIONS AND INSTALLATION WITH NEW AND/OR MODIFIED CONCEALED BY OTHER TRADES. PIPING MODIFICATIONS SHALL MINIMIZE ANY LOW POINTS AND TRAPS IN THE PIPE ROUTING. IF ALTERNATE #1 IS NOT ACCEPTED, EXISTING FIRE SPRINKLER SYSTEM TO REMAIN.

**HVAC NOTES**

1. PROVIDE 8 INCH HIGH CONCRETE BASE FOR AIR HANDLING UNIT, 6 INCHES WIDER IN ALL DIRECTIONS. EXISTING PARTIAL CONCRETE BASE CAN BE RE-USED.
2. PROVIDE 30" x 12" x 12" OUTSIDE AIR PLENUM CONNECTED TO EXISTING LOUVER. SLOPE BOTTOM OF PLENUM DOWNWARD TOWARDS OUTSIDE AIR LOUVER.
3. 80"x80" RELIEF AIR DUCT UP TO EXISTING ROOF VENT. PROVIDE MOTORIZED DAMPER IN RELIEF DUCT. FIELD COORDINATE EXACT LOCATION.
4. ALTERNATE #1. 60"x24" RETURN AIR DUCT DOWN TO EXISTING DUCT AT FLOOR. FIELD COORDINATE EXACT SIZE AND LOCATION. IF ALTERNATE #1 IS NOT ACCEPTED, EXISTING RETURN DUCT TO REMAIN.
5. 28"x18" SUPPLY AIR DUCT DOWN TO EXISTING DUCT AT FLOOR. FIELD COORDINATE EXACT SIZE AND LOCATION.
6. COIL PULL CLEARANCE SHOWN FOR REFERENCE. POSITION AIR HANDLING UNIT SO THAT CLEARANCE IS PROVIDED FOR COIL PULL.
7. EXISTING CATWALK FOR RETURN FAN MAINTENANCE.
8. THE EXISTING LOUVER TO BE REMOVED TO PROVIDE EGRESS OF DEMOLISHED EQUIPMENT AND INGRESS OF NEW EQUIPMENT. RE-INSTALL EXISTING LOUVER AFTER EGRESS AND INGRESS OF EQUIPMENT HAS OCCURRED.
9. ALTERNATE #1. IF ALTERNATE #1 IS NOT ACCEPTED, EXISTING RETURN DUCT TO REMAIN.
10. ALTERNATE #1. IF ALTERNATE #1 IS NOT ACCEPTED, EXISTING RETURN AIR FAN TO REMAIN.
11. ALTERNATE #1. IF ALTERNATE #1 IS NOT ACCEPTED, EXISTING RETURN AIR FAN VFD TO REMAIN.
12. AIR FLOW MEASURING STATION IS PART OF BASE BID. IF ALTERNATE #1 IS NOT ACCEPTED, AIR FLOW MEASURING STATION IS PART OF BASE BID. IF ALTERNATE #1 IS NOT ACCEPTED, AIR FLOW MEASURING STATION IS PART OF BASE BID.
13. ALTERNATE #3. IF ALTERNATE #3 IS NOT ACCEPTED, EXISTING RETURN DUCT TO REMAIN.
14. ALTERNATE #4. IF ALTERNATE #4 IS NOT ACCEPTED, EXISTING RETURN DUCT TO REMAIN.
15. ALTERNATE #5. IF ALTERNATE #5 IS NOT ACCEPTED, EXISTING RETURN AIR FAN VFD TO REMAIN.
16. ALTERNATE #5. 30"x12" RETURN AIR DUCT DOWN TO EXISTING DUCT AT FLOOR. FIELD COORDINATE EXACT SIZE AND LOCATION. IF ALTERNATE #5 IS NOT ACCEPTED, EXISTING RETURN DUCT TO REMAIN.
17. ALTERNATE #6. IF ALTERNATE #6 IS NOT ACCEPTED, EXISTING AIR HANDLING UNIT TO REMAIN.
18. AIR FLOW MEASURING STATION IS PART OF ALTERNATE #6. IF ALTERNATE #6 IS NOT ACCEPTED, AIR FLOW MEASURING STATION TO BE INSTALLED IN EXISTING DUCT.



Greater Columbus Convention Center IAQ Upgrade  
OWNER  
Greater Columbus Convention Center  
400 North High Street  
Columbus, Ohio 43215



MARK	DATE	DESCRIPTION
1	03/09/20	Addendum 1
	23	

PROJECT NO: 2022-07014  
REVIT FILE: C:\BIM\Mod\2022-07014-HVAC-Central\_mechroom.rvt  
DRAWN BY: MED  
CHKD BY:  
PROJECT STATUS: CONSTRUCTION DOCUMENTS  
ISSUE DATE: 02/24/2023  
COPYRIGHT:

SHEET TITLE  
SOUTH BUILDING LEVEL 4 MECH. ROOM - ENLARGED NEW WORK PLAN  
H202

C:\BIM\Mod\2022-07014-HVAC-Central\_mechroom.rvt 3/9/2023 1:08:44 PM